



PRODUCT
CATALOG

2022

Why MikroTik?

MikroTik provides routing, switching and wireless equipment for all possible uses - from the customer location, up to high end data centres.

We have an extensive network of trained consultants, training centres and distributors in almost every country of the world.


Established in Europe in 1996, we have 26 years of experience in networking and wireless installations.

Our in-house developed RouterOS software supports most common and many special features and we are constantly adding new customer requested features.

Whether you are building wireless links across the seas, internet exchanges between countries or secure tunnels between banks- MikroTik can do it all.

- Best price/performance
- Millions of RouterOS powered devices are currently routing the world
- 26 years of developing networking software and hardware
- Over 200'000 RouterOS trained and certified network engineers
- Several thousand training sessions conducted each year
- World wide network of certified consultants
- Offering products that support simple CPEs to complex enterprise networks
- Thousands of pages of documentation, examples, application notes, and guides

RB5009UG+S+IN

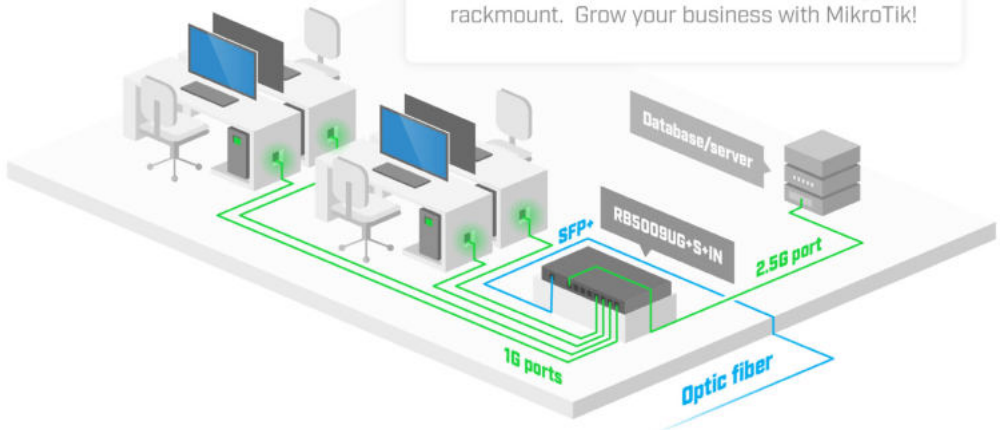
mt.lv/p/543 

The ultimate heavy-duty home lab router - unprecedented processing power in such a small form factor.


- Marvell Armada 4-core ARMv8 1.4 GHz CPU
 - 1GB of DDR4 RAM and 1GB NAND storage
 - 1x 2.5 Gigabit Ethernet, 7x Gigabit Ethernet
 - 10G SFP+ cage
 - Indoor desktop metal enclosure, that works as a massive heat sink
 - Full size USB v3.0
- With the K-79 mounting kit, you can fit four of these new routers in a single 1U rackmount space!



Add more RB5009's when necessary – you can fit up to 4 of these devices in a single rackmount. Grow your business with MikroTik!



CCR2004-1G-12S+2XS


mt.lv/p/513 

The Connectivity Router- your best companion when it comes to SFP, SFP+ and SFP28 management! 1, 10 and 25 Gbps ports in a single device to make your life easier.



- 12 x 10G SFP ports
- 2 x 25G SFP28 ports
- MikroTik router with the most powerful single-core performance so far. It provides incredible results in single tunnel (up to 3.4 Gbps) and BGP feed processing
- Dual redundant power supply
- 4GB DDR4 RAM, 128 MB NAND
- AL32400 1700 MHz quad-core CPU

CCR2004-16G-2S+

mt.lv/p/541 

This powerful and affordable router crushes all previous CCR models in single-core performance.



- Annapurna Labs Alpine v2 CPU with 4x 64-bit ARMv8-A Cortex-A57 cores running at 1.7GHz
- 4GB of DDR4 RAM and 128MB of NAND storage
- 16 x Gigabit Ethernet ports
- 2 x 10G SFP+ cages
- Full size USB, RJ-45 console port
- 1U active cooling rackmount case
- Built-in dual redundant power supplies

hEX series

The hEX series of devices are small form factor Ethernet routers with neat plastic design enclosures. They have a total of five ports.



hEX lite

mt.lv/p/56 

A small, but powerful five port Ethernet router in a nice plastic case.

- 850 MHz CPU, 64 MB RAM
- Compact size



hEX PoE lite

mt.lv/p/267 

This model supports PoE output on it's Ethernet ports, so you can power other devices.

- 5x 10/100 Mbps Ethernet ports
- 650 MHz CPU, 64 MB RAM
- Ethernet ports 2-5 can power other PoE capable devices



hEX

mt.lv/p/262 

The hEX is a small and powerful router with Gigabit Ethernet, IPsec acceleration and more.

- 5 Gigabit Ethernet ports
- Dual core 880 MHz CPU, 256 MB RAM
- IPsec hardware encryption (~470 Mbps) support
- Support for The Dude server package
- microSD slot and USB



hEX PoE

mt.lv/p/295 

This model also has PoE output capability, but includes Gigabit Ethernet ports and an SFP cage.

- 5 Gigabit Ethernet ports
- SFP port for 1.25 Gigabit connectivity
- Ethernet ports 2-5 can power other PoE capable devices
- 800 MHz CPU, 128 MB RAM

hEX S is a six port wired Gigabit router for locations where wireless connectivity is not required. Compared to the hEX, the hEX S also features an SFP port and PoE output on the last port.



- Dual Core 880 MHz CPU
- 256 MB RAM
- 1.25Gbit/s SFP cage
- USB 2.0 and microSD slot
- 12 V- 57 V input support by PoE or power jack
- 802.3at/af support
- IPsec hardware encryption (~470 Mbps)
- Dude Server package support

PowerBox series

The PowerBox series of devices are Ethernet routers in outdoor enclosures, ready to be mounted in any weather conditions. They are capable to power MikroTik routers and other supported devices through PoE (Power over Ethernet).



PowerBox

mt.lv/p/251 

The basic model is good for 10/100 Mbit devices and lower bandwidth requirements.

- 5x 10/100 Mbps Ethernet ports
- 650 MHz CPU, 64 MB RAM




PowerBox Pro

mt.lv/p/313 

The professional model adds Gigabit ports and a more capable CPU.

- 5 Gigabit Ethernet ports
- SFP port for 1.25 Gigabit connectivity
- 800 MHz CPU, 128 MB RAM

RB2011iL-IN

[mt.lv/p/142](#) 



The RB2011 lite model comes in a desktop case and features a PoE out port, just like all the other models.

- 600 MHz CPU, 64 MB RAM
- Desktop case

RB2011iL-RM


[mt.lv/p/161](#) 



The RM model is similar, but comes in a larger, rackmountable enclosure.

- 600 MHz CPU, 64 MB RAM
- Rackmount case

RB2011iLS-IN

[mt.lv/p/153](#) 



This device includes an SFP port for fiber and copper modules. See the Accessories chapter for recommended modules.

- SFP port for 1.25 Gigabit connectivity
- 600 MHz CPU, 64 MB RAM
- Desktop case

RB2011UiAS-IN

[mt.lv/p/157](#) 



The U models include more RAM and a USB port.

- SFP port for 1.25 Gigabit connectivity
- 600 MHz CPU, 128 MB RAM
- LCD display and USB
- Desktop case

RB2011UiAS-RM

[mt.lv/p/162](#) 



Similar to the above model, but comes in a rackmountable enclosure.

- SFP port for 1.25 Gigabit connectivity
- 600 MHz CPU, 128 MB RAM
- LCD display and USB
- Rackmount case

RB3011UiAS-RM


mt.lv/p/271 



The RB3011 is a multi port device, our first to be running an ARM architecture CPU for higher performance than ever before.

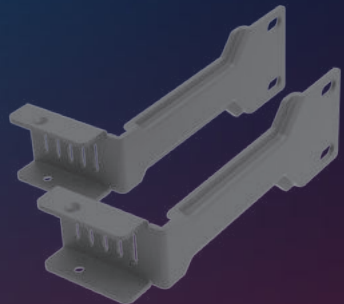
- 10 Gigabit Ethernet ports
- Dual core ARM 1.4 GHz CPU, 1 GB RAM
- SFP port for 1.25 Gigabit connectivity
- LCD display and USB 3.0

RB4011iGS+RM

mt.lv/p/422 


RB4011 series - amazingly powerful routers with ten Gigabit ports, SFP+ 10Gbps interface and IPsec hardware acceleration for a great price!

The RB4011 uses a quad core Cortex A15 CPU, same as in our carrier grade RB1100AHx4 unit. The unit is equipped with 1 GB of RAM, can provide PoE output on port #10 and comes with a compact and professional looking solid metal enclosure in matte black.



- Quad-core 1.4 GHz CPU
- 1 GB of RAM
- All metal passive cooled enclosure

RB1100AHx4 Dude Edition

mt.lv/p/312 

The RB1100AHx4 Dude Edition has an Annapurna Alpine AL21400 CPU with four Cortex A15 cores clocked at 1.4 GHz each, for a maximum throughput of up to 7.5 Gbps. The device supports IPsec hardware acceleration and is faster at it than any previous RouterBOARD device (up to 2.2 Gbps with AES128).

The unit comes in a 1U rackmount case, 13 Gigabit Ethernet ports, RS232 serial port and dual redundant power supplies (with - 48 V DC telecom power and 802.3at/af support). The RB1100AHx4 Dude edition features several high speed storage connectors (two SATA and two M.2) for storing The Dude database, proxy cache or for any other storage intensive task. A 60 GB M.2 drive is already included.



- 13 Gigabit Ethernet ports
- Four core Annapurna Alpine 1.4 GHz ARM CPU, 1 GB RAM
- Maximum throughput of up to 7.5 Gbps
- IPsec hardware acceleration (up to 2.2 Gbps with AES128)
- Dual redundant power supplies (with -48 V DC telecom power and 802.3at/af support)
- Two SATA and two M.2 connectors for storage
- 60 GB M.2 drive already installed

RB1100AHx4

mt.lv/p/327 

Powerful 13 Gigabit Ethernet port router in a rackmount case with dual redundant power supplies.



- 13 Gigabit Ethernet ports
- Four core Annapurna Alpine 1.4 GHz CPU, 1 GB RAM
- Maximum throughput of up to 7.5 Gbps
- IPsec hardware acceleration of up to 2.2 Gbps with AES128
- Dual redundant power supplies (with -48 V DC telecom power and 802.3at/af support)

The Cloud Core Router series of devices are powered by our fastest networking processors, based on the Tiler architecture. The CCR series is the top of the line Ethernet routers for your most demanding needs.

The CCR series devices use Tiler multicore CPUs, which are so powerful, that the devices can easily handle all port routing without a switch chip. All of the CCR series devices support hardware IPsec acceleration.

CCR1009-7G-IC-PC

mt.lv/p/296 



Tiler 9-core CPU, Gigabit Ethernet, IPsec acceleration and combo port. The combo port allows you to select which of the two options you wish to use, an SFP port or another Gigabit copper port. The passively cooled device makes this device absolutely quiet.

- 7 Gigabit Ethernet ports
- Combo (Gigabit Ethernet or SFP) port
- 1 GB RAM
- Silent passive cooling enclosure

CCR1009-7G-IC-IS+PC

mt.lv/p/297 



Tiler 9-core CPU, Gigabit Ethernet, IPsec acceleration, combo port, and additional SFP+ port for 10G connectivity.

- Eight Gigabit Ethernet ports
- Combo (Gigabit Ethernet or SFP) port
- 2 GB RAM
- LCD touch screen, smart card slot, microSD slot
- Silent passive cooling enclosure

CCR1009-7G-IC-IS+


mt.lv/p/298 



The same Tiler 9-core CPU, Gigabit Ethernet, IPsec acceleration, combo port, but in a rackmount case with built in dual PSU.

- Eight Gigabit Ethernet ports
- Combo (Gigabit Ethernet or SFP) port
- SFP+ port for 10 Gbps connectivity
- 2 GB RAM
- LCD touch screen, smart card slot, microSD slot
- Dual power supplies built-in for redundancy
- 1U rackmount enclosure

CCR1016-12G

mt.lv/p/165 

Powerful 16 core rackmount router with 12 Gigabit Ethernet ports.



- 12 Gigabit Ethernet ports
- Tilerla 16-core CPU, 1.2 GHz per core, 2 GB RAM
- Up to 17.8 Million pps throughput in Fast Path mode (wire speed)
- Up to 12 Gbps throughput with RouterOS queue/firewall configuration
- LCD touch screen
- 1U rackmount enclosure
- full size USB slot and dual PSU for redundancy

CCR1016-12S-IS+

mt.lv/p/221 

Powerful 16 core rackmount router with 12 SFP ports and one SFP+ for 10 Gigabit connectivity.



- 12 SFP ports for 1.25 Gigabit connectivity
- 1 SFP+ port for 10 Gigabit connectivity
- Tilerla 16-core CPU, 1.2 GHz per core, 2 GB RAM
- Dual power supplies built-in for redundancy
- LCD touch screen
- 1U rackmount enclosure
- full size USB slot and dual PSU for redundancy

CCR1036-12G-4S

mt.lv/p/149 

Carrier grade 36 core rackmount router with 12 Gigabit Ethernet ports and four SFP ports for optical fiber connectivity.



- 12 Gigabit Ethernet ports
- 4 SFP ports for 1.25 Gigabit connectivity
- Tilerla 36-core CPU, 1.2 GHz per core, 4 GB RAM
- Up to 24 Mpps throughput in Fast Path mode (wire speed)
- Up to 16 Gbps throughput with RouterOS queue/firewall configuration
- LCD touch screen
- 1U rackmount enclosure
- full size USB slot and dual PSU for redundancy

CCR1036-12G-4S-EM


mt.lv/p/185 

The same carrier grade 36 core rackmount router with 12 Gigabit Ethernet ports and four SFP ports for optical fiber connectivity, but with more RAM for high intensity tasks.

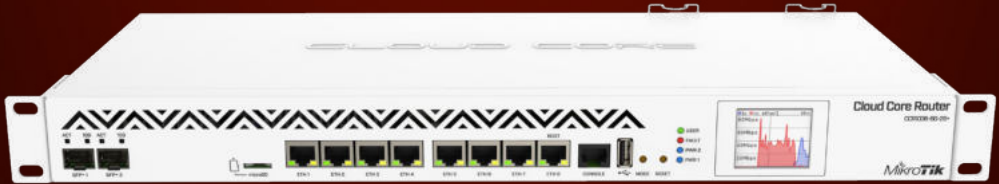


- 8 GB of RAM
- full size USB slot and dual PSU for redundancy

CCR1036-8G-2S+

mt.lv/p/196 

The CCR1036-8G-2S+ is a high performance networking router with eight Gigabit ports, two SFP+ ports for 10G connectivity and dual power supplies for redundancy. Powered by a 36 core CPU, this router is able to perform the most complicated routing and management tasks, for managing large networks with high bandwidth requirements.



Each of its ports is directly connected to the Tilera networking CPU, with no ports sharing any bandwidth, guaranteeing the best performance and highest reliability. The CPU supports IPsec hardware accelerated encryption, so you can use it also as a high performance VPN gateway to ensure the best encryption between important locations, without sacrificing connection speed.

The M.2 slot allows to install a high speed SSD disk, for using a local user database, proxy storage or for other features.

- Tilera 36-core CPU, 1.2 GHz per core, 4 GB RAM
- 8 Gigabit Ethernet ports
- 2 SFP+ ports for 10 Gigabit connectivity
- Up to 41.5 Mpps throughput in Fast Path mode (wire speed)
- Up to 28 Gbps throughput with RouterOS queue/firewall configuration
- LCD touch screen and full size USB port
- 1U rackmount enclosure with two power supplies for redundancy

CCR1036-8G-2S+EM

mt.lv/p/197 



The same carrier grade 36 core rackmount router with 8 Gigabit Ethernet ports and two SFP+ 10G ports for optical fiber connectivity, but with more RAM for high intensity tasks.

- 8 GB of onboard RAM

CCR1072-1G-8S+

Our flagship router, the CCR1072, is powered by a Tiler 72 core CPU, each core is clocked at 1 GHz, and to fully utilize this power, the CCR1072 is equipped with eight independently connected 10G SFP+ ports.

Thanks to the unique 72 core processor and ports that are directly connected to the CPU, the CCR1072 is capable of over 120 million packets per second throughput.



The unit comes equipped with two removable (hot plug) power supplies for redundancy, smart card slot, eight SFP+ ports and 16 GB of built in ECC RAM.

The CCR1072 also has two built-in M.2 slots, microSD slot and 2x USB ports for adding storage, to use for proxy cache, user manager and other features. The M.2 slots accept 800 mm Key-M x4 PCIe 2.0 modules.

Quick specifications

- 1 Gigabit Ethernet port
- 8 SFP+ ports for 10 Gigabit connectivity
- Tiler 72-core CPU, 1 GHz per core, 16 GB RAM
- Up to 120 Mpps throughput in Fast Path mode (wire speed)
- Up to 80 Gbps throughput
- Two built-in M.2 slots, microSD slot and 2x USB
- LCD touch screen
- Two hot swap power supplies for redundancy (two 12POW150 included)
- 1U rackmount enclosure
- PW48V-12V150W can be used as an alternative





hAP mini

mt.lv/p/311 

A tiny size 2.4 GHz SOHO AP with three Ethernet ports in a tower case.

- 802.11b/g/n dual chain wireless
- 3x 10/100 Mbps Ethernet ports
- 650 MHz CPU, 32 MB RAM
- Tiny size (8 cm tall) tower enclosure
- Most affordable MikroTik AP



hAP lite TC


mt.lv/p/265 

A compact 2.4 GHz SOHO AP with four Ethernet ports in a colorful tower case.

- 802.11b/g/n dual chain wireless
- 4x 10/100 Mbps Ethernet ports
- 650 MHz CPU, 32 MB RAM
- Compact colorful tower case
- Button triggered WPS



hAP lite classic

mt.lv/p/253 

A compact 2.4 GHz SOHO AP with four Ethernet ports in a desktop case.

- 802.11b/g/n dual chain wireless
- 4x 10/100 Mbps Ethernet ports
- 650 MHz CPU, 32 MB RAM
- Compact desktop case
- Button triggered WPS




hAP

mt.lv/p/260 

A compact 2.4 GHz SOHO AP with five Ethernet ports in a desktop case and PoE support.

- 802.11b/g/n dual chain wireless
- 5x 10/100 Mbps Ethernet ports (PoE output on port 5)
- 650 MHz CPU, 64 MB RAM
- Compact desktop case
- USB

mAP

mt.lv/p/240 



A small size travel router with 2.4 GHz wireless, two Ethernet ports and PoE output. Configure the ports as desired (one WAN and one LAN, or any other combination).

- 802.11b/g/n dual chain wireless
- 2x 10/100 Mbps Ethernet ports (PoE output on port 2)
- 650 MHz CPU, 64 MB RAM
- Accepts power from a wide variety of sources - USB, PoE and power jack
- Small case

cAP life

mt.lv/p/307 



A tiny 2.4 GHz AP, perfect for public locations and hospitality businesses.

- Two different casings included – ceiling and wall mount
- 802.11b/g/n dual chain wireless
- 1.5 dBi 2.4 GHz antenna
- 10/100 Mbps Ethernet
- 650 MHz CPU, 64 MB RAM

cAP

mt.lv/p/245 



A Compact 2.4 GHz AP with ceiling case for larger coverage, perfect for public locations and hospitality businesses.

- 802.11b/g/n dual chain wireless
- 2 dBi 2.4 GHz antenna
- 10/100 Mbps Ethernet
- 650 MHz CPU, 64 MB RAM
- Ceiling case

wAP

mt.lv/p/264 



A small weatherproof 2.4 GHz wireless access point for mounting on a ceiling, wall or pole.

- 802.11b/g/n dual chain wireless
- 10/100 Mbps Ethernet
- 650 MHz CPU, 64 MB RAM
- Weatherproof outdoor case, available in white and black



RB951Ui-2HnD

mt.lv/p/190 

A high power 2.4 GHz AP in desktop case with five Ethernet ports and PoE support.

- 802.11b/g/n 2.4 GHz high power dual chain wireless
- 5x 10/100 Mbps Ethernet ports (PoE output on port 5)
- 600 MHz CPU, 128 MB RAM
- Compact desktop case
- USB, NAND memory for storage



RB951G-2HnD


mt.lv/p/172 

A high power 2.4 GHz AP in desktop case with five Gigabit Ethernet ports.

- 802.11b/g/n 2.4 GHz high power dual chain wireless
- 5 Gigabit Ethernet ports
- 600 MHz CPU, 128 MB RAM
- Compact desktop case
- USB, NAND memory for storage



RB2011UiAS-2HnD-IN

mt.lv/p/158 

A high power multi port 2.4 GHz AP in a metal desktop case with PoE functionality and support for optical fiber connectivity.

- 802.11b/g/n 2.4 GHz high power dual chain wireless with external dipole antennas
- 5x Gigabit Ethernet ports
- 5x 10/100 Mbps Ethernet ports
- Ethernet port 10 can power other PoE capable devices
- SFP port for 1.25 Gigabit connectivity
- 600 MHz CPU, 128 MB RAM, LCD display and USB
- Sturdy metal desktop enclosure



mAP lite

mt.lv/p/283 

A tiny size travel router with 2.4 GHz AP functionality.

- Our smallest wireless access point, barely larger than a matchbox
- 802.11b/g/n dual chain wireless
- 10/100 Mbps Ethernet
- Can be used as a client device to improve laptop signal range
- 650 MHz CPU, 64 MB RAM

hAP ac lite

[mt.lv/p/278](#) 



A compact dual concurrent 2.4 GHz / 5 GHz SOHO AP with five Ethernet ports in a desktop case and PoE support

- 802.11b/g/n dual chain and 802.11a/n/ac single chain wireless
- Five 10/100 Mbps Ethernet ports (PoE output on port 5)
- 650 MHz CPU, 64 MB RAM
- Compact classic desktop case
- USB

hAP ac lite tower

[mt.lv/p/299](#) 



A compact dual concurrent 2.4 GHz / 5 GHz SOHO AP with five Ethernet ports in a universal case and PoE support.

- 802.11b/g/n dual chain and 802.11a/n/ac single chain wireless
- Five 10/100 Mbps Ethernet ports (PoE output on port 5)
- 650 MHz CPU, 64 MB RAM
- Universal case to be positioned either horizontally or vertically
- USB

hAP ac

[mt.lv/p/284](#) 



A dual concurrent 2.4 GHz / 5 GHz high power AP with five Gigabit Ethernet ports, SFP and PoE support.

- 802.11b/g/n triple chain and 802.11a/n/ac triple chain high power wireless
- 5 Gigabit Ethernet ports (PoE output on port 5)
- SFP port for 1.25 Gigabit connectivity, USB
- 720 MHz CPU, 128 MB RAM

wsAP ac lite


[mt.lv/p/350](#) 



An in-wall dual concurrent 2.4 GHz / 5 GHz wireless access point with three Ethernet ports and telephone jack pass through for hospitality networks.

- In-wall case that fits US and EU most popular telecommunication sockets
- 802.11b/g/n 2.4 GHz dual chain and 802.11a/n/ac 5 GHz single chain wireless
- Pass through telephone jack (RJ11)
- USB for charging mobile devices or for storage
- 650 MHz CPU, 64 MB RAM

hAP ac²

mt.lv/p/344 

The hAP ac² is a Dual-concurrent Access Point, that provides Wifi coverage for 2.4 GHz and 5 GHz frequencies at the same time. Five 10/100/1000 Ethernet ports provide Gigabit connections for your wired devices, and USB can be used for external storage or 4G/LTE modem.

New design universal case allows unit to be positioned either horizontally (desktop) or vertically (tower case). Wall anchored mounting kit is provided.



- 802.11b/g/n dual chain high power wireless
- 802.11a/n/ac dual chain high power wireless
- 4 core 716 MHz CPU, 128 MB RAM
- New design universal case to be positioned either horizontally (desktop) or vertically (tower case)
- Support for IPsec hardware encryption and The Dude monitoring server
- USB

cAP ac

mt.lv/p/343 



A powerful dual concurrent 2.4 GHz / 5 GHz wireless access point with two Gigabit Ethernet ports and PoE functionality, that looks beautiful on both walls and ceilings.

- 802.11b/g/n dual chain wireless
- 802.11a/n/ac dual chain wireless
- 2 Gigabit Ethernet ports (PoE output on port 2)
- 716 MHz CPU, 128 MB RAM
- The customizable mode button in the device center will turn off all lights and sounds, can be reconfigured to launch any RouterOS script.
- Two different casings included – circular and square, to match any taste.

RB4011iGS+5HacQ2HnD-IN

mt.lv/p/423 



The RB4011 uses the amazingly powerful quad core Cortex A15 chip from Annapurna labs, an Amazon company, same as in our carrier grade RB1100AHx4 unit.

- Quad-core 1.4 GHz CPU
- 1 GB of RAM
- Quad chain 5 GHz, dual chain 2 GHz access point
- All metal passive cooled enclosure
- External antennas for best coverage

A wireless dual-band router with Gigabit Ethernet ports and external high gain antennas for more coverage. The new enclosure allows mounting the device vertically or horizontally. A wall mount set is also included.

- 5 x Gigabit Ethernet ports
- iOS/Android app for quick and easy configuration
- USB
- PoE-in/PoE-out
- 128 MB NAND, 256 MB RAM
- Strong dual-chain dual-band 2.4/5 GHz wireless
- Powerful external high gain antennas (3 – 5.5 dBi). You can use the SMA ports to add antennas of your choice
- Powerful quad-core CPU



wAP ac - upgraded version

Black mt.lv/p/525 

White mt.lv/p/524 

A new revision of the popular dual-band weatherproof wireless access point for mounting on a pole, wall, or the ceiling. This wAP ac features 2x Gigabit Ethernet ports, enhanced wireless antenna performance, more RAM, and a powerful quad-core CPU!

- Two Gigabit Ethernet ports
- PoE-in
- Better cooling
- Weatherproof outdoor case, available in white or black
- Can be fixed to any external wall from the inside of the case – for extra security and less visible attachments



The ceiling AP on steroids! Our bestseller cAP is back – juiced up and stronger than ever. Compared to the previous cAP models, the improved high-gain antenna increases the covered area by up to 100%!

- Gigabit Ethernet
- Improved dual-band 2.4/5 GHz signal
- PoE-in, PoE-out
- Inconspicuous and compact

